

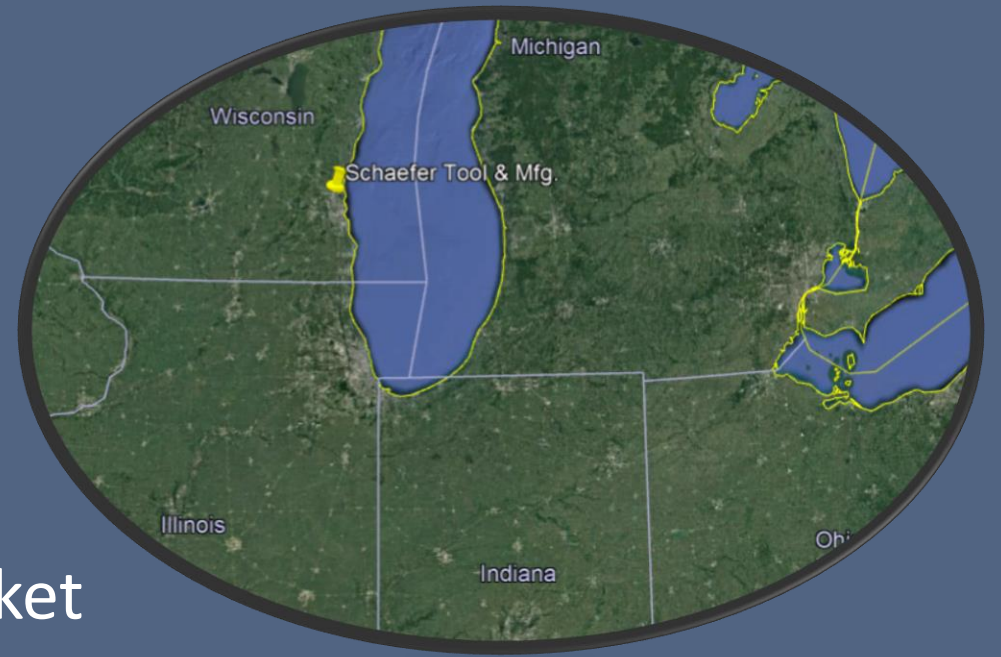


Continually Improving Stamping & Assembly for Over 55 Years

Business Overview – 2020

Background

- Founded in Milwaukee, Wisconsin in 1963 by Don Schaefer
- We serve many markets in the USA, Mexico, Europe, and Asia:
 - Medium & Heavy Duty Trucks, and Buses
 - Passenger Vehicle & Motorcycle
 - Lawn & Garden – Small Engine
 - Electricity Generation & Natural Gas Valves
 - Liquid Dispensing Valves
 - Roller/Ball Bearings
- ISO 9001:2015 Certified FM514676
- Globally Diverse Supply Base & Sales Market



What We Offer

- High Volume Value-Added Assemblies
- High Volume Stampings 5,000,000+pcs/year
- Low Volume Stamping & Prototyping
- Secondary Value-Added Operations
 - Machining, Laser & Water Jet Cutting, Spot & MIG Welding, Tempering, Assembly
- Finishing Services
 - Deburring, Plating, E-coat & Powder Coat Paint
- Specialized & Custom Packaging Solutions
- 3D CAD Modeling, with Engineering Design & Development
- European Union RoHS 3 and REACH Compliance
- Global Supply Base Maximizes Quality while Minimizing Cost
- Unparalleled Customer Service



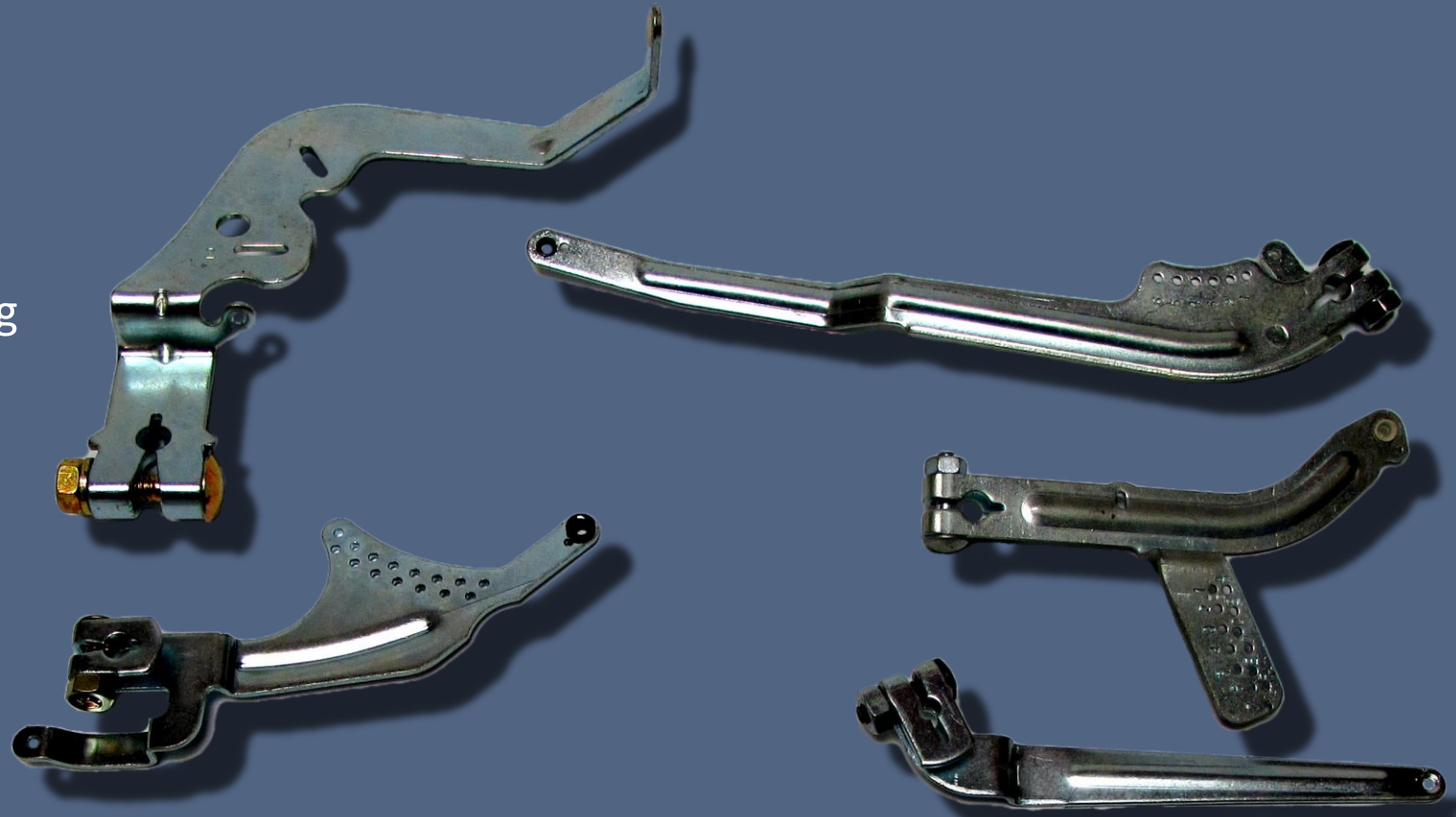
Example Process: Tube Assemblies

1. **STAMP:** 4 Stampings produced in Progressive Tools
2. **DEBURR:** Stampings Deburred
3. **ASSEMBLE:** Spring Assembly Produced
4. **MACHINING:** DOM Tube Machined on Lathe and VMMC to Produce Bearing Race and Main Slot
5. **WELDING:** Brackets, Wire Form and Spring Assemblies Welded to Tube
6. **MACHINING:** Tube ID is Bored to $\pm 0.002''$. Slots are Cut to Produce Friction Tab feature
7. **PAINT:** Mounting Tube Assembly is Epoxy E-Coated
8. **PACK:** Sample Size is Inspected, and Assemblies are Packed into Corrugate Dividers and Layer Packed in Returnable Totes with AIAG Barcodes



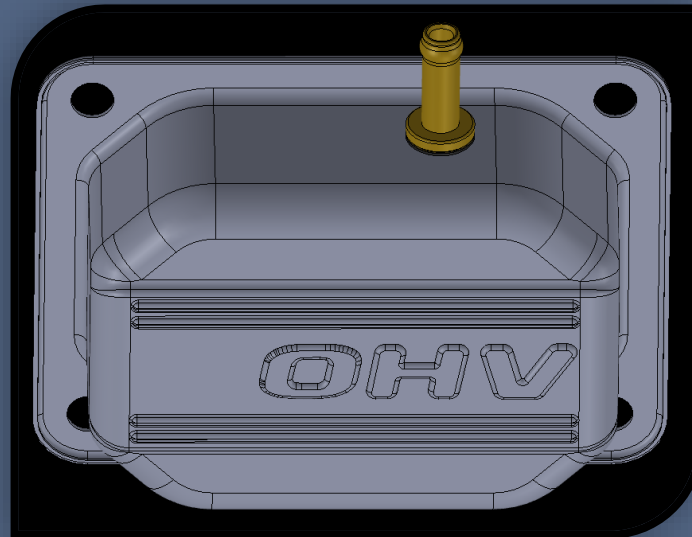
Example Process: Lever Assemblies

- 1. STAMPING:** Stamped with Progressive Tool
- 2. PLATING:** Zinc plated and Passivated with Clear Trivalent Chromate
- 3. GROMMET:** Plastic Grommet Bushing Heat-Flared into Lever
- 4. ASSEMBLY:** Nut and Bolt Torqued to Specification in Automated Machine
- 5. PACKAGING:** Packaged in Returnable Dunnage with AIAG Barcodes for Shipment



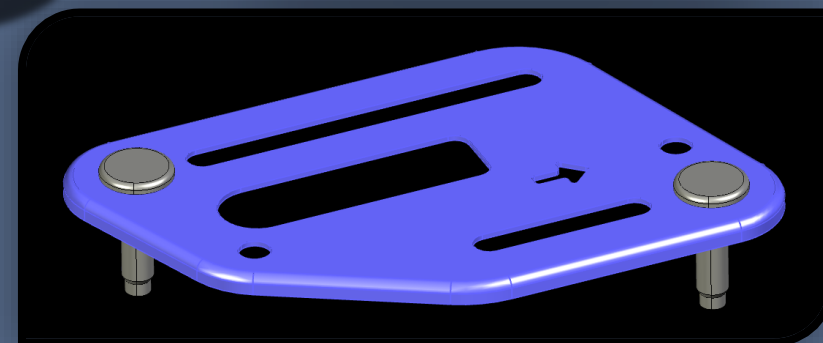
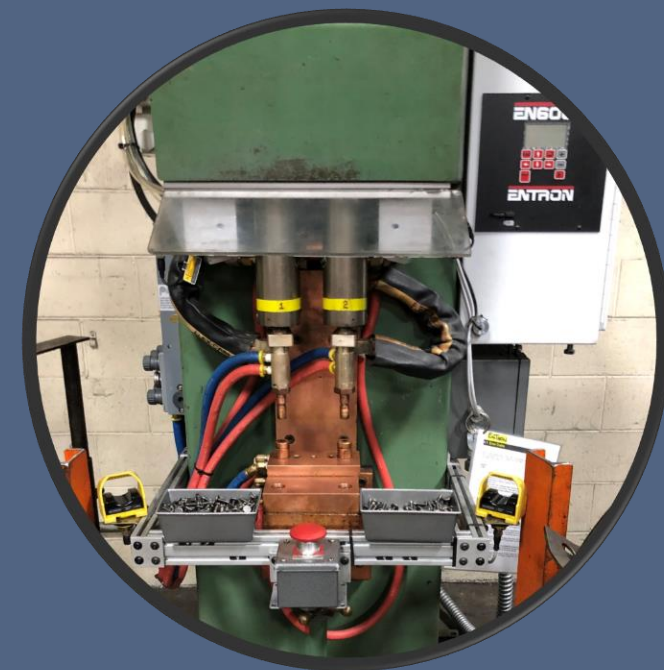
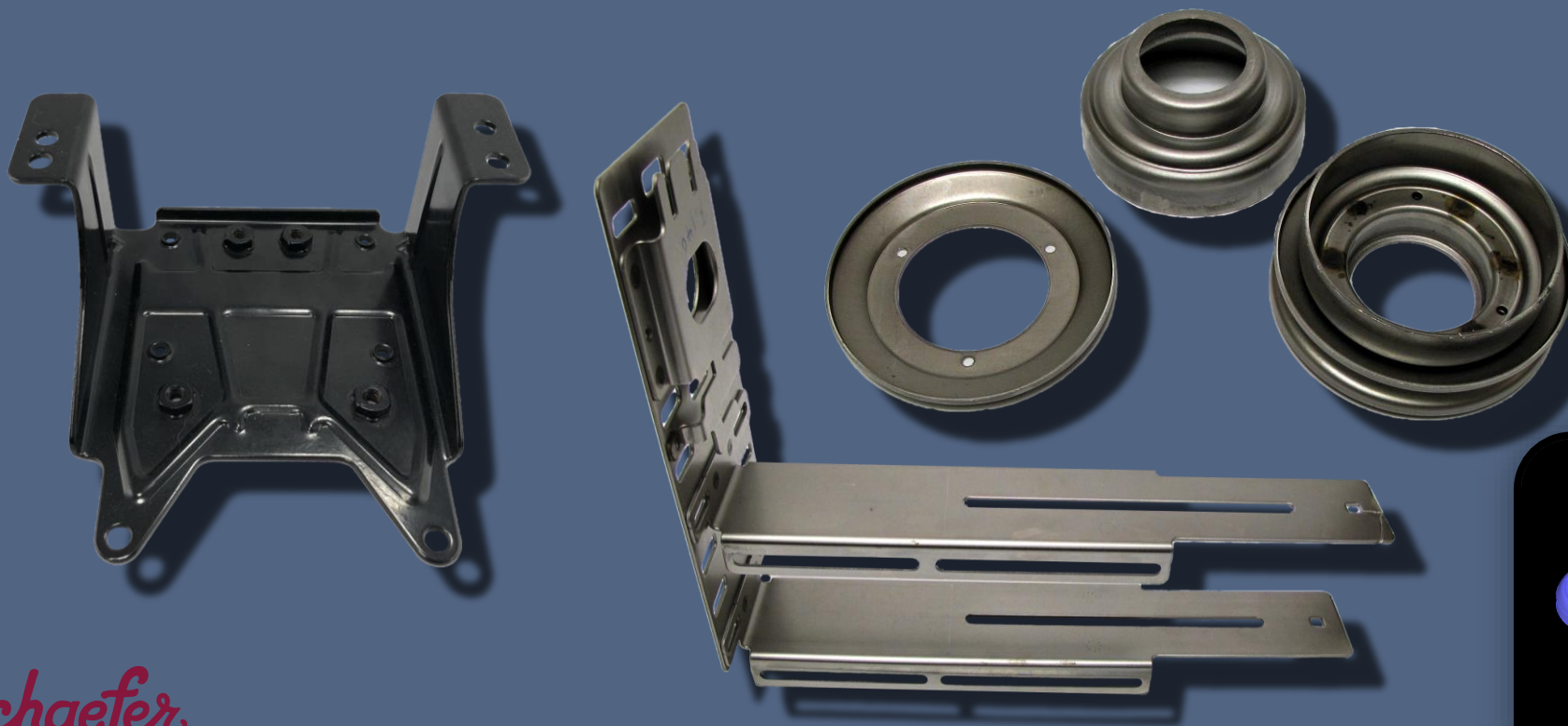
Example Process: Valve Cover Assemblies

1. **STAMP:** Deep Draw Galvanized Stamping in Progressive Stamping Tool
2. **ASSEMBLE:** Install Gasket onto Brass Tube as a Seal
3. **RIVET:** Form Brass Flange with Gasket onto Stamping with Hydraulic Press
3. **ASSEMBLE:** Install Rubber Tube onto Brass Flange

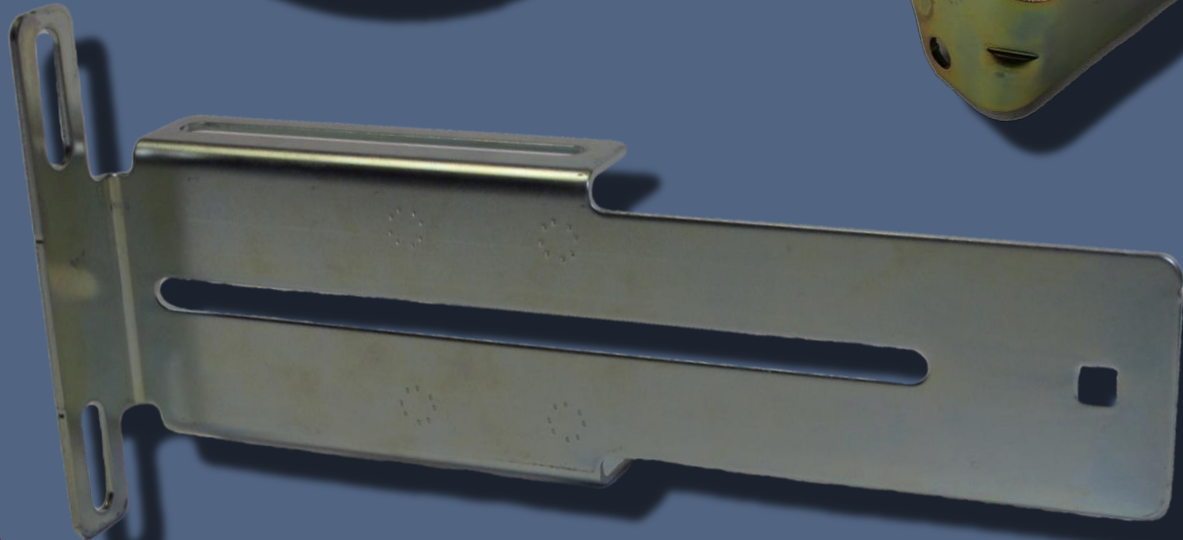
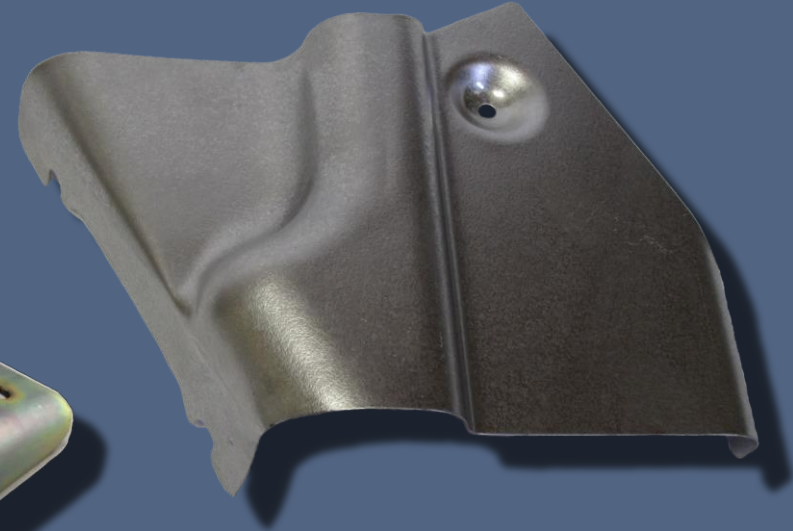
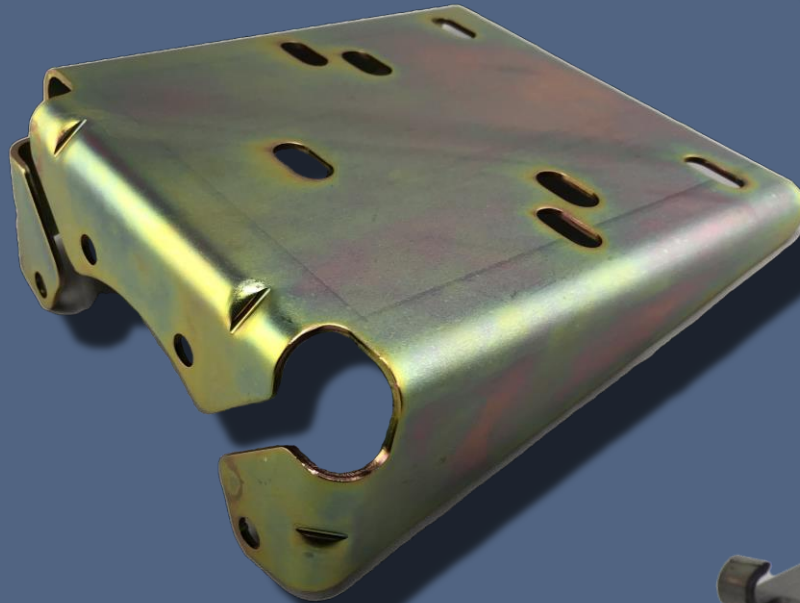
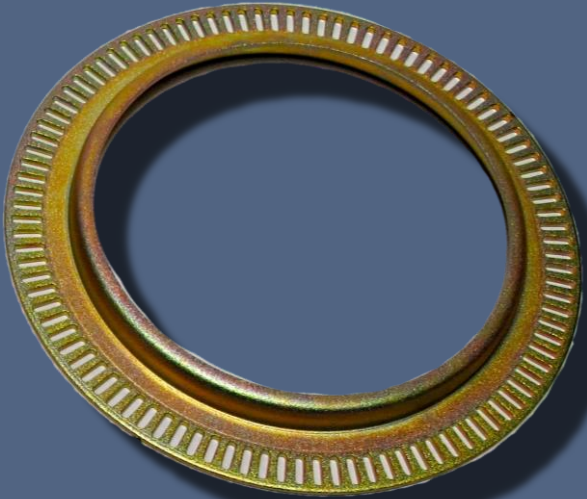


Examples of Resistance Welded Assemblies

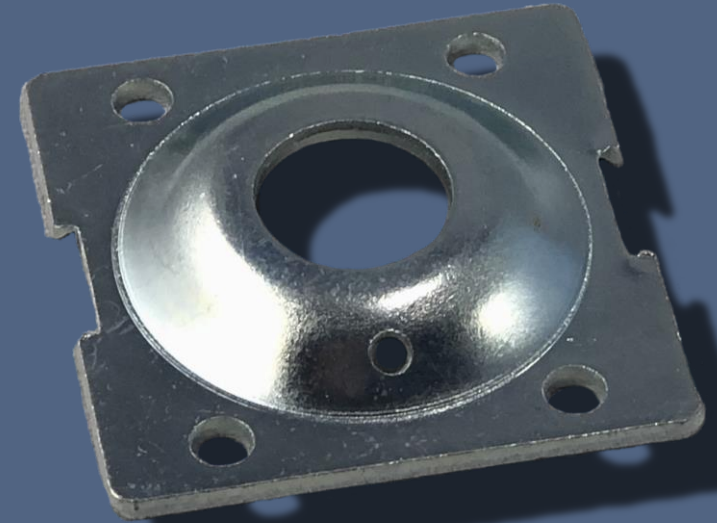
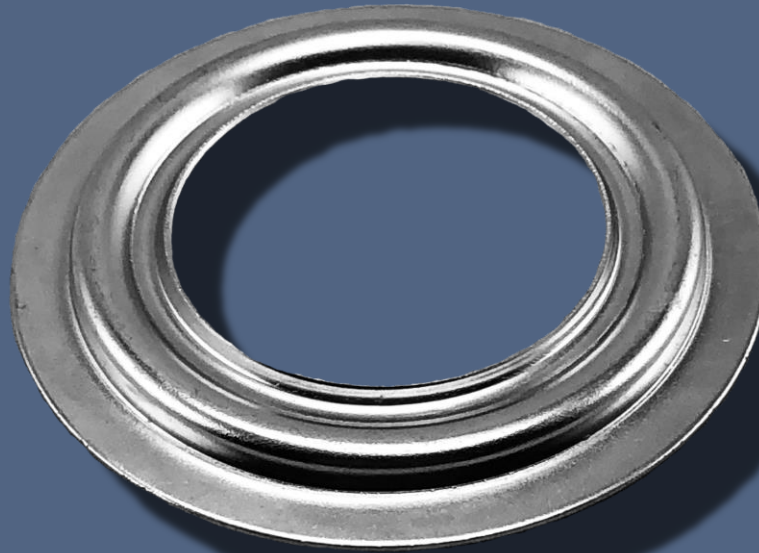
- Custom Projection Weld Nuts & Screws
- Clutch Pulley Assembly, Frame Rails
- New Welding Machine with Sensors and PLC



Examples of Large Stampings



Examples of Small and Medium Stampings





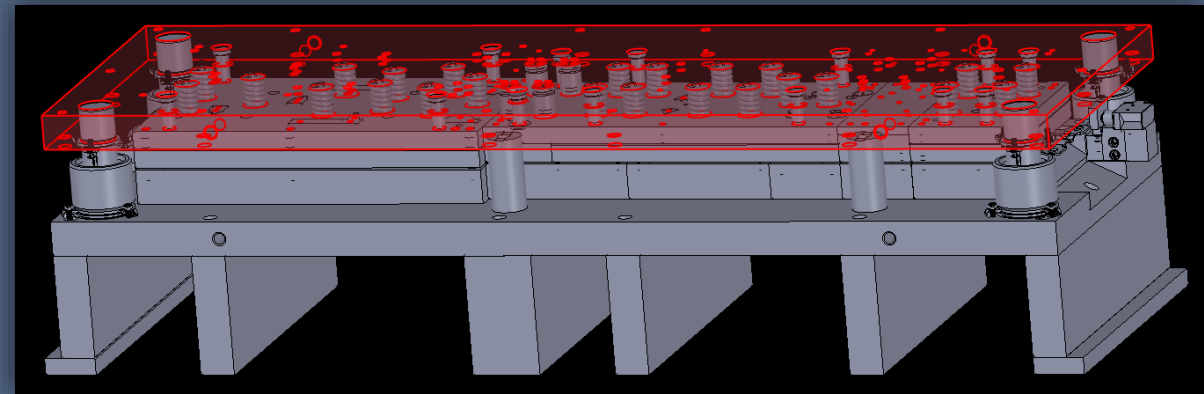
Advanced Quality Capabilities

- UniPoint QMS integrated with JobBOSS ERP
- Zeiss CMM for Quality Monitoring & Reverse Engineering
- Zeiss Calypso CMM Software
- Mitutoyo Digital Hardness Tester
- Quantrol Digital Force Tester
- Deltronics CNC Auto-Sensing Comparator
- PFMEA, APQP, Full Level III+ AIAG PPAP Capabilities
- Gagetrak Gage Calibration Software
- Short- and Long-Term SPC Software



Premier Engineering & Product Design Support

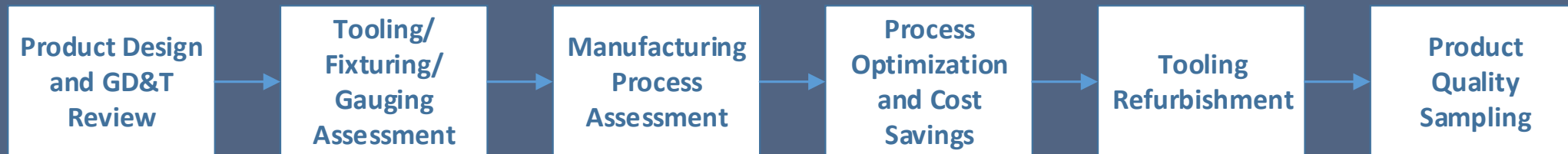
- SolidWorks 2019 with 3D QuickPress & QuickForm
- DFM & FMEA Collaboration
- GD&T Applications & Reverse Engineering
- Product & Tooling Lifecycle Management
- Prototyping & Testing Capabilities
- Robust NPI Process for Launch/ECO
- 6 Sigma & Kaizen Ideology
- Poka-yoke Mistake-proofing



Robust Tool Takeover and Product Transfer

- Decades of experience managing tool takeover and product transfer
- Skilled Project Management with Customer Collaboration along the way, to ensure Critical Quality Attributes & Deadlines are met

- Tool Takeover Process Flow Overview:



Breadth & Depth of Manufacturing Knowledge

- Very Wide Range of Part Sizes across 250+ current SKUs
 - Smallest stamped component weighs only 0.2g
 - Largest stamped rails exceed 5kg per piece
- Large Variety of Materials We Currently Stamp Include:
 - Hot Rolled & Cold Rolled Steels – HRPO, HSLA, CRCQ, CRDQ/DS/EDDS
 - Galvanized & Aluminized Steels – G60, G90, hot-dip galv-annealed
 - Stainless & Spring Steels – 301, 302, 304, 316, 430
 - Aluminum – 1010, 3003, 5052, 6061
 - Copper – C11000, C17200 beryllium spring copper
 - Brass Alloys – C26000, C26800, C28000, and tin plated varieties
- Familiar with nearly all automotive plating and conversion coatings
 - Zn+passivation, Mn/Zn/Fe phos, Zn-Ni, Zn-Co, Cadmium, Chemlok for Overmolding